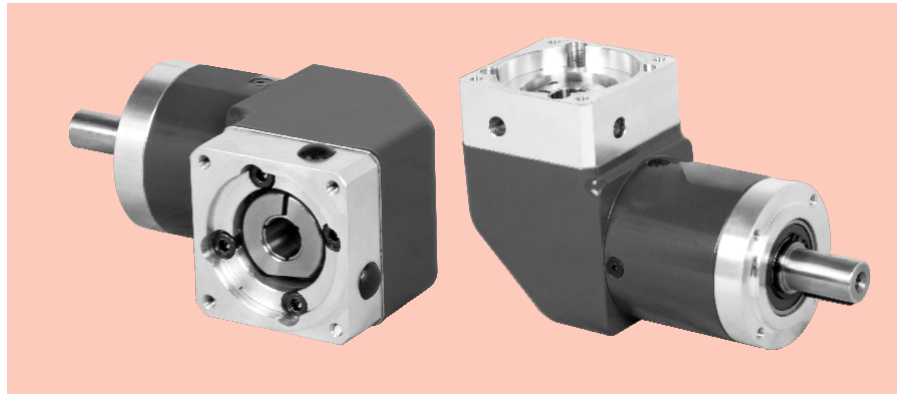


XP-2A/B 系列精密减速机

XP-2A/B SERIES PRECISION PLANETARY GEARBOX

产品图 Product Graph



技术资料 Technical Data

| 产品型号 Product type | | 60 | 80 | 120 | 160 | 减速比 Reduction ratio | 级数 Number of stage | |
|-------------------------------|---------|--|-----|------|------|---------------------|--------------------|--|
| 额定输出扭矩 Rated output torque | N.M | 12 | 40 | 80 | 400 | 3 | 1 | |
| | | 16 | 50 | 110 | 450 | 4 | | |
| | | 16 | 50 | 110 | 450 | 5 | | |
| | | 15 | 45 | 100 | 400 | 8 | | |
| | | 12 | 40 | 80 | 305 | 10 | | |
| | | 40 | 100 | 210 | / | 9 | 2 | |
| | | 40 | 100 | 210 | 700 | 12 | | |
| | | 40 | 100 | 210 | 700 | 15 | | |
| | | 44 | 120 | 260 | 800 | 16 | | |
| | | 44 | 120 | 260 | 800 | 20 | | |
| | | 40 | 110 | 230 | 700 | 25 | 3 | |
| | | 44 | 120 | 260 | 800 | 32 | | |
| | | 40 | 110 | 230 | 700 | 40 | | |
| | | 18 | 45 | 100 | 400 | 64 | | |
| | | 40 | 100 | 210 | / | 60 | | |
| | | 44 | 120 | 260 | / | 80 | 3 | |
| | | 44 | 120 | 260 | / | 100 | | |
| | | 40 | 100 | 210 | / | 120 | | |
| | | 44 | 120 | 260 | / | 160 | | |
| | | 40 | 110 | 230 | / | 200 | | |
| 44 | 120 | 260 | / | 256 | 3 | | | |
| 40 | 110 | 230 | / | 320 | | | | |
| 18 | 45 | 100 | / | 512 | | | | |
| 寿命 Life | 小时 Hour | 20,000 | | | | | | |
| 瞬间急停扭矩 Instant stop torque | N.M | 2倍于额定输出扭矩 Two times of rated output torque | | | | | | |
| 产品型号 Product type | | 60 | 80 | 120 | 160 | 单位 Unit | 级数 Number of stage | |
| 最大径向力 Max radial torque | | 450 | 900 | 2100 | 6000 | N | | |
| 最大轴向力 Max axial torque | | 225 | 450 | 1050 | 3000 | N | | |
| 满载效率 Full load efficiency | | 94 | | | | % | 1 | |
| | | 92 | | | | | 2 | |
| | | 88 | | | | | 3 | |
| 重量 Weight | | 1.7 | 4.4 | 12 | 36 | Kg | 1 | |
| | | 1.9 | 5 | 14 | 40 | | 2 | |
| | | 2.1 | 5.5 | 16 | / | | 3 | |
| 工作温度 Operating temperature | | -25~+90 | | | | °C | | |
| 保护等级 IP | | IP54 | | | | | | |
| 润滑方式 Lubrication type | | 终身润滑 Lifetime lubrication | | | | | | |
| 安装方式 Mounting type | | 任意 Any | | | | | | |

最大径向力与最大轴向力,输出100RPM时,作用于输出轴中心位置(L/2)处。

The max radial and axial torque work in the location of the center of output shaft when the out speed is 100RPM.

XP-2A/B 系列精密减速机

XP-2A/B SERIES PRECISION PLANETARY GEARBOX

■ 技术资料 Technical Data

| 产品型号 Product type | | 60 | 80 | 120 | 160 | 减速比 Reduction ratio |
|---------------------------|-------------------|-------|-------|------|------|---------------------|
| 转动惯量 Moment of inertia | Kgcm ² | 0.246 | 1.189 | 5.75 | 24.5 | 3 |
| | | 0.204 | 0.939 | 3.91 | 19.4 | 4 |
| | | 0.189 | 0.869 | 3.35 | 17.5 | 5 |
| | | 0.176 | 0.809 | 2.89 | 15.9 | 8 |
| | | 0.152 | 0.730 | 2.54 | 15.5 | 10 |
| | | 0.242 | 1.159 | 5.73 | / | 9 |
| | | 0.199 | 0.919 | 3.83 | / | 12 |
| | | 0.188 | 0.859 | 3.28 | 17.5 | 15 |
| | | 0.199 | 0.919 | 3.83 | 19.4 | 16 |
| | | 0.186 | 0.859 | 3.28 | 17.5 | 20 |
| | | 0.186 | 0.859 | 3.26 | 17.5 | 25 |
| | | 0.175 | 0.809 | 2.84 | 15.9 | 32 |
| | | 0.175 | 0.809 | 2.84 | 15.9 | 40 |
| | | 0.175 | 0.809 | 2.84 | 15.9 | 64 |
| | | 0.186 | 0.919 | 3.28 | / | 60 |
| | | 0.186 | 0.919 | 3.28 | / | 80 |
| | | 0.186 | 0.859 | 3.26 | / | 100 |
| | | 0.175 | 0.809 | 2.84 | / | 120 |
| | | 0.175 | 0.809 | 2.84 | / | 160 |
| 0.175 | 0.809 | 2.84 | / | 200 | | |
| 0.175 | 0.809 | 2.84 | / | 256 | | |
| 0.175 | 0.809 | 2.84 | / | 320 | | |
| 0.175 | 0.809 | 2.84 | / | 512 | | |

| 产品型号 Product type | | 60 | 80 | 120 | 160 | 级数 Number of stage |
|-----------------------------|-------------------|------|------|------|------|--------------------|
| 回程间隙 Backlash | arcmin 弧分 | < 30 | < 25 | < 25 | < 25 | 1 |
| | | < 35 | < 30 | < 30 | < 30 | 2 |
| | | < 40 | < 35 | < 35 | / | 3 |
| 抗扭刚性 Torsional stiffness | N.M/arcmin | 1.5 | 4.5 | 10 | 38 | 1 |
| | | 2.5 | 6.5 | 13 | 43 | 2 |
| | | 2.5 | 6.3 | 12 | / | 3 |
| 噪声 Noise | dB(A) | 65 | 68 | 70 | 70 | |
| 最高输入转速 Max input speed | min ⁻¹ | 4500 | 4500 | 4500 | 4500 | |
| 推荐输入转速 Recommnd input speed | min ⁻¹ | 3000 | 3000 | 3000 | 3000 | |

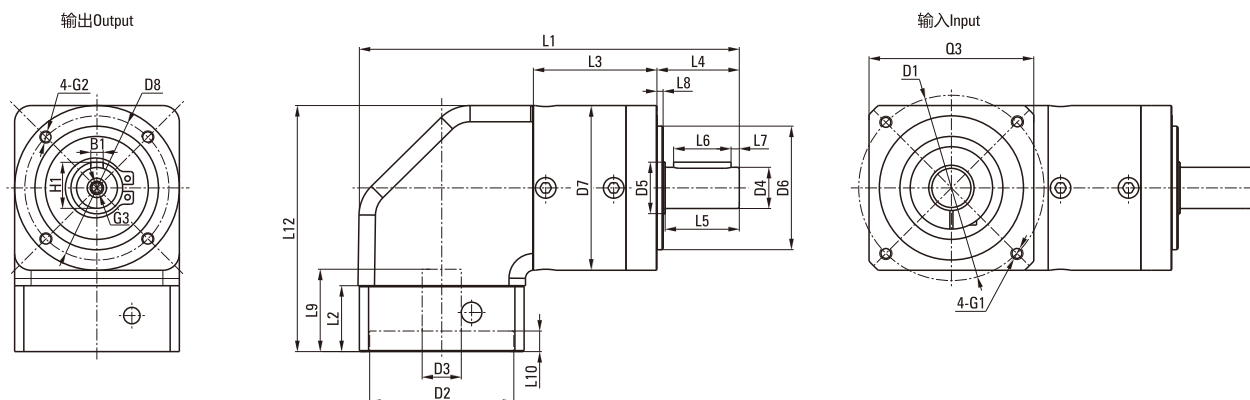
1. 转动惯量与输入轴有关。The moment of inertia is related with input shaft.

2. 噪声检测标准，距离1m，在输入转速3000转/分空载时测得。Noise test standard pressure level, distance 1m, measured on idle running with an input speed of 3000rpm.

XP-2A 系列精密减速机

XP-2A SERIES PRECISION PLANETARY GEARBOX

机械参数 Dimensions



单位 Unit: mm

| 产品型号 Product type | 60ZDWE | | | 80ZDWE | | | 120ZDWE | | | 160ZDWE | |
|---|--------|------|------|--------|-------|------|---------|-------|-------|----------|-------|
| 级数 Number of stage | 1 | 2 | 3 | 1 | 2 | 3 | 1 | 2 | 3 | 1 | 2 |
| L1箱体总长 L1 overall length | 150 | 163 | 176 | 184.5 | 202.5 | 220 | 249.2 | 277 | 304.5 | 380 | 423.5 |
| L3箱体长度 L3 body length | 46.5 | 59.5 | 72.5 | 60 | 78 | 95.5 | 73.7 | 101.5 | 129 | 141 | 184.5 |
| L12总高 L12 overall heights | 93 | | | 119.5 | | | 167.5 | | | 229 | |
| 输出端 Output | | | | | | | | | | | |
| L4出轴长度 L4 output shaft length | 35 | | | 40 | | | 55 | | | 87 | |
| L5出轴长至轴肩 L5 output length to the shaft shoulder | 30.5 | | | 36 | | | 50 | | | 80 | |
| L6键长度 L6 key length | 25 | | | 28 | | | 40 | | | 70 | |
| L7键至轴末端长 L7 key length to the shaft end | 2.5 | | | 4 | | | 5 | | | 5 | |
| L8定位凸台长度 L8 spigot length | 3 | | | 3 | | | 4 | | | 5 | |
| D4出轴直径 D4 output shaft diameter | Φ14h7 | | | Φ20h7 | | | Φ25h7 | | | Φ40h7 | |
| D5轴肩直径 D5 shaft shoulder diameter | Φ17 | | | Φ25 | | | Φ35 | | | Φ55 | |
| D6定位凸台直径 D6 spigot diameter | Φ40h7 | | | Φ60h7 | | | Φ80h7 | | | Φ130h7 | |
| D7箱体直径 D7 body diameter | Φ60 | | | Φ80 | | | Φ115 | | | Φ160 | |
| D8安装孔分布圆 D8 hole circle | Φ52 | | | Φ70 | | | Φ100 | | | Φ145 | |
| B1键宽 B1 key width | 5 | | | 6 | | | 8 | | | 12 | |
| H1键高 H1 key height | 16 | | | 22.5 | | | 28 | | | 43 | |
| G2安装螺纹孔x深度 G2 mounting thread x depth | M5X8 | | | M6X10 | | | M10X16 | | | M12X20 | |
| G3中心螺纹孔 G3 center screw hole | M5X12 | | | M6X16 | | | M10X22 | | | M12X25 | |
| 输入端 Input | | | | | | | | | | | |
| L2输入法兰长度 L2 input flange length | 20 | | | 32 | | | 38 | | | 66 | |
| L9电机轴长度 L9 motor shaft length | 30 | | | 40 | | | 58 | | | 81 | |
| L10定位凸台深 L10 spigot depth | 5 | | | 10 | | | 10 | | | 10 | |
| D1安装孔分布圆 D1 mounting hole distribution circle | Φ70 | | | Φ90 | | | Φ145 | | | Φ200 | |
| D2定位凸台直径 D2 spigot diameter | Φ50G7 | | | Φ70G7 | | | Φ110G7 | | | Φ114.3G7 | |
| D3输入轴轴径 D3 input shaft diameter | ≤Φ14G7 | | | ≤Φ19G7 | | | ≤Φ24G7 | | | ≤Φ35G7 | |
| G1安装螺纹孔x深度 G1 mounting threads x depth | M5X12 | | | M6X15 | | | M8X22 | | | M12X25 | |
| Q3输入法兰 Q3 input flange | □60 | | | □80 | | | □130 | | | □175 | |

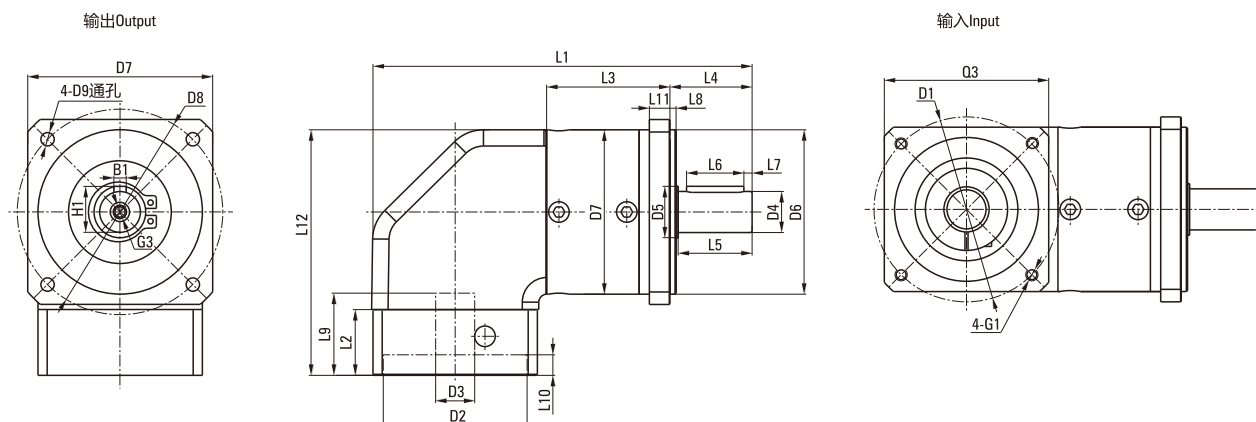
※输入端尺寸可根据电机尺寸制作。

※Input size made according to motor size.

XP-2B 系列精密减速机

XP-2B SERIES PRECISION PLANETARY GEARBOX

机械参数 Dimensions



单位 Unit: mm

| 产品型号 Product type | 60ZDWF | | | 80ZDWF | | | 120ZDWF | | | 160ZDWF | |
|---|--------|------|------|--------|-------|------|---------|-------|-------|-----------|-------|
| 级数 Number of stage | 1 | 2 | 3 | 1 | 2 | 3 | 1 | 2 | 3 | 1 | 2 |
| L1箱体总长 L1 overall length | 150 | 163 | 176 | 184.5 | 202.5 | 220 | 249.2 | 277 | 304.5 | 380 | 423.5 |
| L3箱体长度 L3 body length | 46.5 | 59.5 | 72.5 | 60 | 78 | 95.5 | 73.7 | 101.5 | 129 | 141 | 184.5 |
| L12总高 L12 overall heights | 93 | | | 119.5 | | | 167.5 | | | 229 | |
| 输出端 Output | | | | | | | | | | | |
| L4出轴长度 L4 output shaft length | 35 | | | 40 | | | 55 | | | 87 | |
| L5出轴长至轴肩 L5 output length to the shaft shoulder | 30.5 | | | 36 | | | 50 | | | 80 | |
| L6键长度 L6 key length | 25 | | | 28 | | | 40 | | | 70 | |
| L7键至轴末端长 L7 key length to the shaft end | 2.5 | | | 4 | | | 5 | | | 5 | |
| L8定位凸台长度 L8 spigot length | 3 | | | 3 | | | 4 | | | 5 | |
| L11法兰厚度 L11 flange thickness | 8 | | | 10 | | | 15 | | | 15 | |
| D4出轴直径 D4 output shaft diameter | Φ14h7 | | | Φ20h7 | | | Φ25h7 | | | Φ40h7 | |
| D5轴肩直径 D5 shaft shoulder diameter | Φ17 | | | Φ25 | | | Φ35 | | | Φ55 | |
| D6定位凸台直径 D6 spigot diameter | Φ50h7 | | | Φ80h7 | | | Φ110h7 | | | Φ130h7 | |
| D7箱体直径 D7 body diameter | □60 | | | □90 | | | □120 | | | □160/□175 | |
| D8安装孔分布圆 D8 hole circle | Φ70 | | | Φ100 | | | Φ130 | | | Φ185/Φ200 | |
| D9法兰安装孔 D9 mounting bore | Φ5.5 | | | Φ6.5 | | | Φ8.5 | | | Φ11/Φ13.5 | |
| B1键宽 B1 key width | 5 | | | 6 | | | 8 | | | 12 | |
| H1键高 H1 key height | 16 | | | 22.5 | | | 28 | | | 43 | |
| G3中心螺纹孔 G3 center screw hole | M5X12 | | | M6X16 | | | M10X22 | | | M12X25 | |
| 输入端 Input | | | | | | | | | | | |
| L2输入法兰长度 L2 input flange length | 20 | | | 32 | | | 38 | | | 66 | |
| L9电机轴长度 L9 motor shaft length | 30 | | | 40 | | | 58 | | | 81 | |
| L10定位凸台深 L10 spigot depth | 5 | | | 10 | | | 10 | | | 10 | |
| D1安装孔分布圆 D1 mounting hole distribution circle | Φ70 | | | Φ90 | | | Φ145 | | | Φ200 | |
| D2定位凸台直径 D2 spigot diameter | Φ50G7 | | | Φ70G7 | | | Φ110G7 | | | Φ114.3G7 | |
| D3输入轴轴径 D3 input shaft diameter | ≤Φ14G7 | | | ≤Φ19G7 | | | ≤Φ24G7 | | | ≤Φ35G7 | |
| G1安装螺纹孔x深度 G1 mounting threads x depth | M5X12 | | | M6X15 | | | M8X22 | | | M12X25 | |
| Q3输入法兰 Q3 input flange | □60 | | | □80 | | | □130 | | | □175 | |

※输入端尺寸可根据电机尺寸制作。

※Input size made according to motor size.